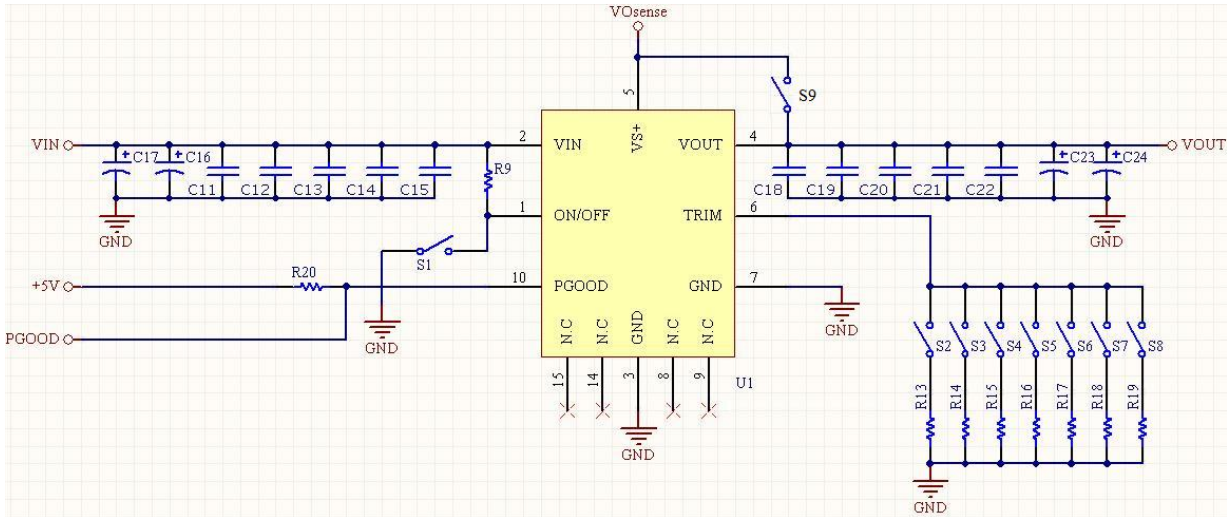
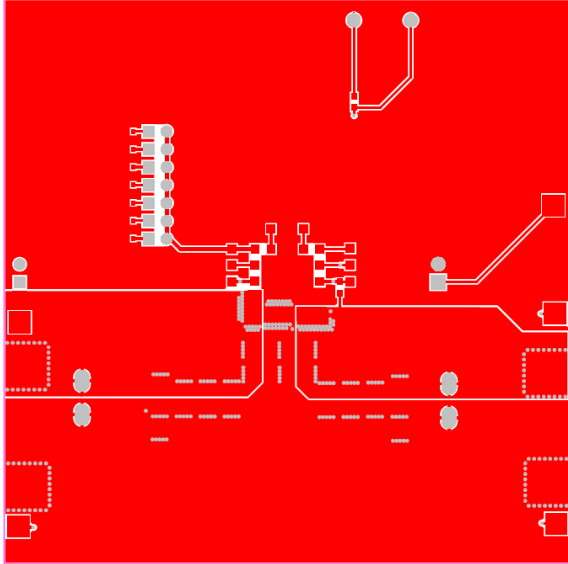


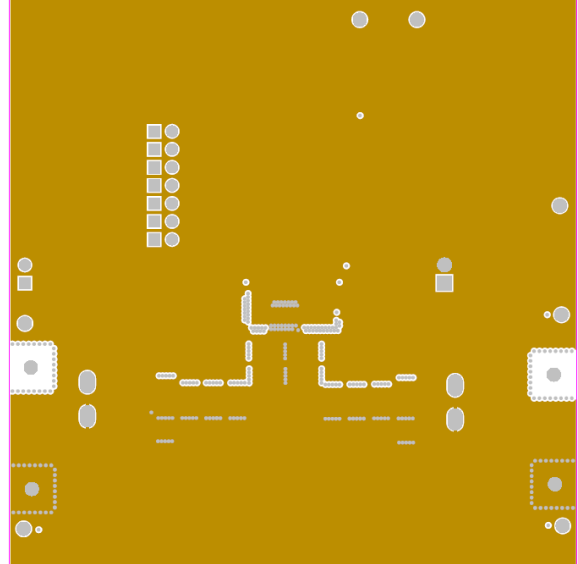
## EVALUATION BOARD SCHEMATIC:



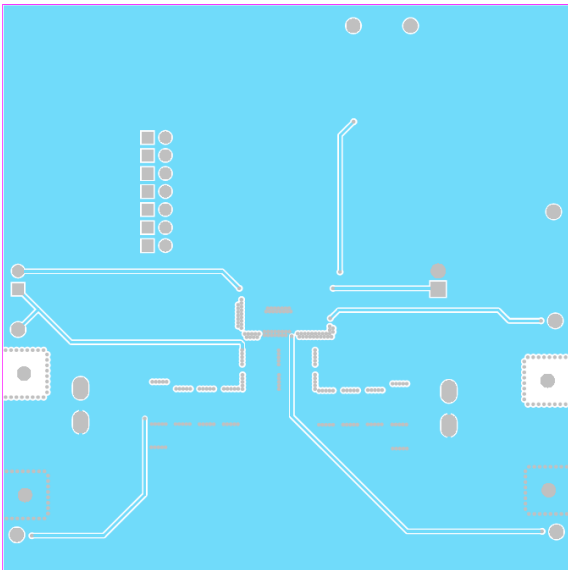
## PRINTED CIRCUIT BOARD LAYOUT:



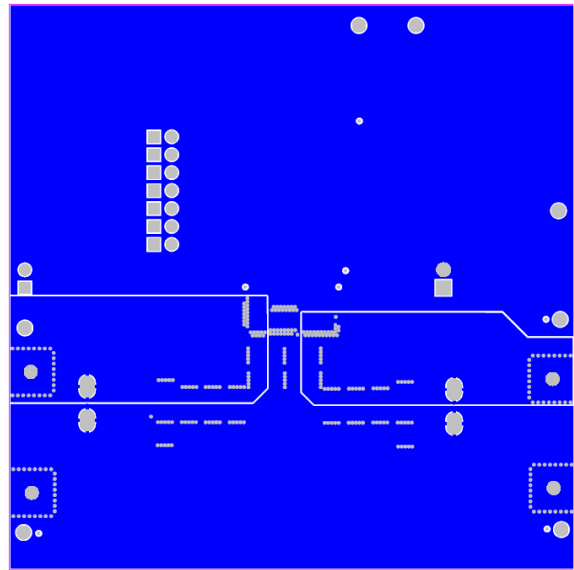
Top Layer



Mid 1 Layer

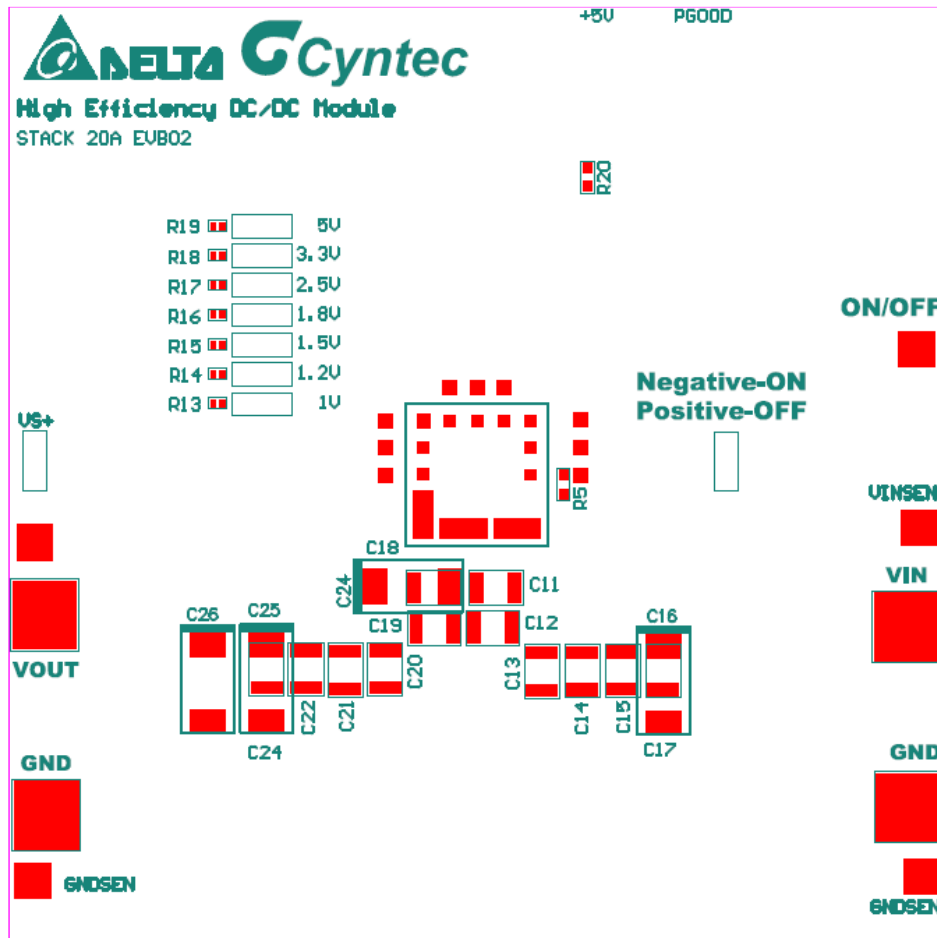
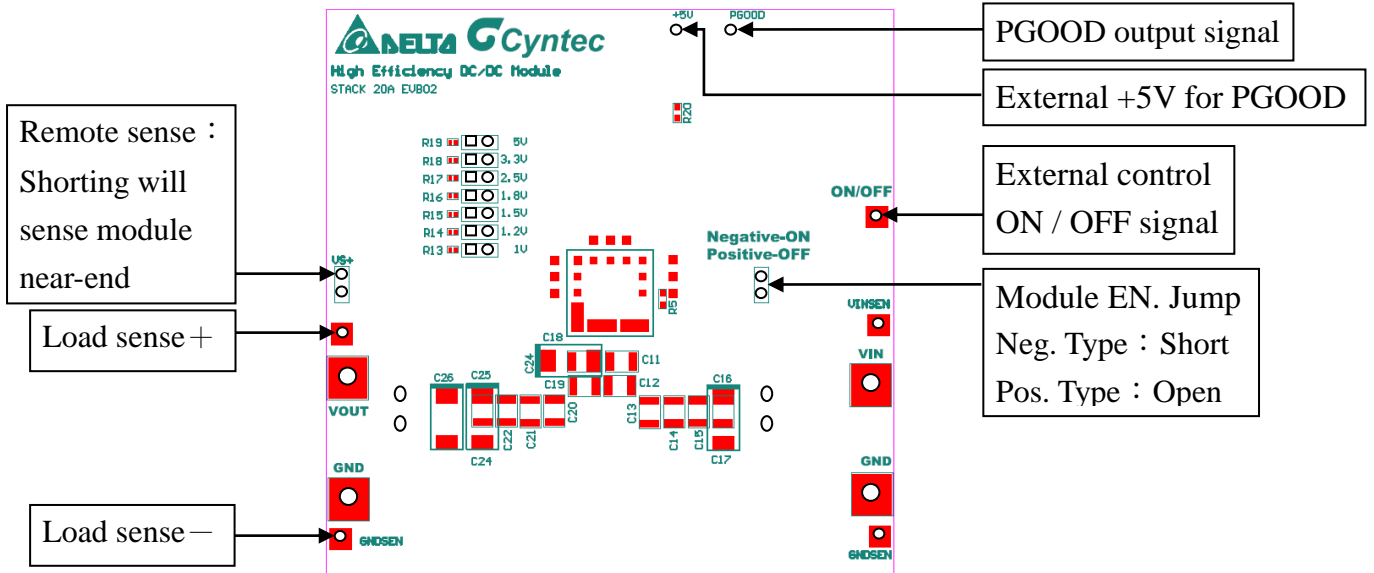


Mid 2 Layer



Bottom Layer

## TEST POINTS INFORMATION:





## MPN12AD12-TS EVB GUIDE

### BOM LIST:

Designator	Function	Description	Note
C11	Input Cap	MLCC / 22uF / 16V / X7R / 1210	
C12	Input Cap	MLCC / 22uF / 16V / X7R / 1210	
C13	Input Cap	MLCC / 22uF / 16V / X7R / 1210	
C14	Input Cap	-	Not Install
C15	Input Cap	-	Not Install
C16	Input Cap	-	Not Install
C17	Input Cap	-	Not Install
C18	Output Cap	MLCC / 47uF / 6.3V / X7R / 1210	
C19	Output Cap	MLCC / 47uF / 6.3V / X7R / 1210	
C20	Output Cap	MLCC / 47uF / 6.3V / X7R / 1210	
C21	Output Cap	-	Not Install
C22	Output Cap	-	Not Install
C24	Output Cap	-	Not Install
C25	Output Cap	-	Not Install
C26	Output Cap	POSCAP / 330uF / 6.3V / low ESR	
R5	ON / OFF	51k / 0603	
R13	TRIM	15k / 0402	
R14	TRIM	10k / 0402	
R15	TRIM	6.65k / 0402	
R16	TRIM	4.99k / 0402	
R17	TRIM	3.16k / 0402	
R18	TRIM	2.21k / 0402	
R19	TRIM	1.37k / 0402	
R20	Voltage Dividing	1k / 0402	
U1	Module	MPN12AD12-TS	